

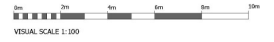
Side Elevation (East)
1 : 100



Front Elevation
1 : 100



Front Elevation
1 : 100



Materials Legend

Main House
 Main Facade - Red Brick
 External Windows - Timber Composite Cladding (Black)
 Roof - Thin Clay Concrete Tile (Grey & Red)
 Windows - Black Steel Windows (White)
 Doors - Composite (Black)
 External Grounds - UPVC (Black)

Garage
 Main Facade - Timber Composite Cladding (Black) & Red Brick
 Roof - Thin Clay Concrete Tile (Grey & Red)
 Doors - Timber Sluiter (Black)
 External Grounds - UPVC (Black)



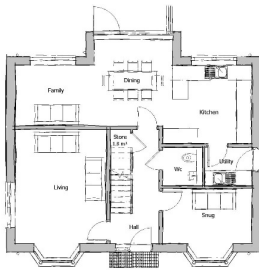
Side Elevation (West)
1 : 100



Rear Elevation
1 : 100



Typical Side Elevation
1 : 100



Ground Floor Plan



First Floor Plan



Garage Floor Plan
1 : 100

P2 22.09.22 RJ ABJ Reduction in garage size from a double to a single garage				
P1 21.04.22 CW RJ Note update to Plot reference				
Rev	Date	Drawn	Checked	Declined
PL				Planning

Sheriff Hutton

Plot 02
GA Plans & Elevations

Location:
Middleton House,
Finkle Street,
Sheriff Hutton
Client:
Mr M Gibson

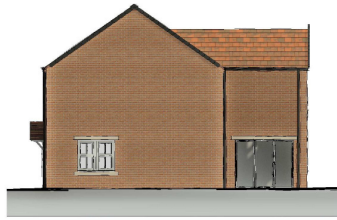
WHARF-WBA-XX-ZZ-DR-A-PL_100		P2
Date:	Drawn:	Checked:
March 22	CW	RJ
As Indicated		4052/003

NATSON BATTY ARCHITECTS

Shires House, Shires Road
Gusley, Leeds LS20 8EU
Leeds - Loughborough
T: 01943 876 665
E: enquiries@natsonbatty.com
W: www.natsonbatty.com



Note: Do not Scale from this drawing. All dimensions to be checked on site



Side Elevation (West)
1 : 100



Front Elevation
1 : 100



Front Elevation
1 : 100



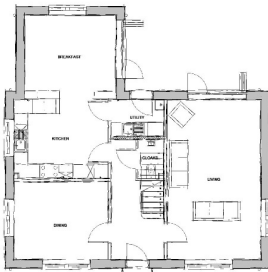
Side Elevation (East)
1 : 100



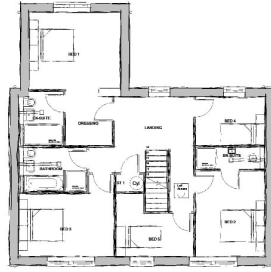
Rear Elevation
1 : 100



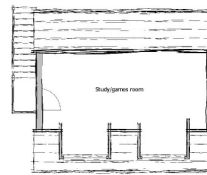
Side Elevation
1 : 100



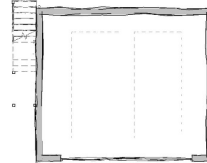
Ground Floor Plan
1 : 100



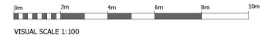
First Floor Plan
1 : 100



Garage First Floor Plan
1 : 100



Garage Ground Floor Plan
1 : 100



Materials Legend

Main House	
Main Facade	Red Brick
Roofline Facade	Timber Composite Cladding (Black)
Roof	Timber Composite Cladding (Black)
Windows	Black Frame Windows (White)
Doors	Composite (Black)
Entrance Details	UPVC (Black)
Garage	
Main Facade	Timber Composite Cladding (Black) & Red Brick
Roof	Timber Composite Cladding (Black)
Doors	UPVC (Black)
Entrance Details	UPVC (Black)

Rev	Date	Drawn	Checked	Description
P1	22.08.22	RJ	ASB	Revisions to garage material from cladding to brick
P2	12.08.22	RJ	ASB	Revisions to Garage First Floor to suit client requirement.
P3	21.04.22	CW	RJ	Take update to Plot reference

PL Planning

Sheriff Hutton

Plot 04

GA Plans & Elevations

Location:
Middleton House,
Finkle Street,
Sheriff Hutton

Client:
Mr M Gibson

Rev	Date	Drawn	Checked	Scale	Plot Ref
WHARF-WBA-XX-ZZ-DR-A-PL_102					P3
March 22	CW	RJ	As Indicated		4052/003

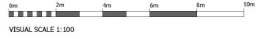
NATSON BATTY ARCHITECTS

Shires House, Shires Road
Gusley, Leeds LS20 8EU
Leeds - Longfborough

T: 01943 876 665
E: enquiries@natsonbatty.com
W: www.natsonbatty.com



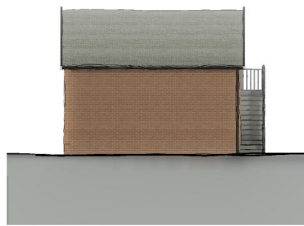
Note: Do not Scale from this drawing. All dimensions to be checked on site



Materials Legend

Main House
 Main Facade - Red Brick
 Feature Facade - Timber Composite Cladding (Black)
 Roof - Thin Clay concrete Tile (Grey & Red)
 Windows - Slim-Line White (White)
 Doors - Composite (Black)
 External Goods - UPVC (Black)

Garage
 Main Facade - Timber Composite Cladding (Black) & Red Brick
 Roof - Thin Clay concrete Tile (Grey & Red)
 Doors - Timber (White Effect)
 External Goods - UPVC (Black)



Rear Elevation
1 : 100



Side Elevation
1 : 100

Rev	Date	Drawn	Checked	Description
P1	22.09.22	RJ	AKB	Revision to garage material from cladding to brick

PL Planning

Sheriff Hutton

Plot 04
Garage Side and Rear Elevations

Location
Middletown House,
Finkle Street,
Sheriff Hutton

Client
Mr M Gibson

Rev	Date	Drawn	Checked	Scale (mm)	Plot Size (mm)
09/22/22	AKB	RJ	As Indicated	4052/003	

NATSON BATTY ARCHITECTS

Shires House, Shires Road
Gusley, Leeds LS20 8EU
Leeds - Loughborough

T: 01943 876 665
E: enquiries@natsonbatty.com
W: www.natsonbatty.com

FUTURE BUILT

Note: Do not Scale from this drawing. All dimensions to be checked on site